

Oshawa



7 ADELAIDE HOUSE

33 McGRIGOR STREET



R.S. McLaughlin commissioned architects Darling and Pearson to design this magnificent Neo-Gothic mansion for his daughter Eileen in 1929. The YWCA was the recipient of the home in 1944.

- YWCA International Gift Boutique
- Y's Choice Catering in the Sunroom



8 OSHAWA VALLEY BOTANICAL GARDENS

155 ARENA STREET



A study in contrasts between the natural history of the *Oshawa Creek* and the formality of the gardens. Stroll through the grounds and view the exciting plans for the future.



9 GLADSTONE VILLA

114 KING STREET EAST



Built in 1903 for Frederick Fowke, Oshawa Mayor and Liberal MP under Wilfred Laurier, *Gladstone Villa* is a delightful Queen Anne Revival structure. The Library is patterned after that on Parliament Hill.

- Site Open Saturday Only



10 COLONEL R.S. McLAUGHLIN ARMOURY

53 SIMCOE STREET NORTH



The Ontario Regiment, Royal Canadian Armoured Corps, moved its headquarters to Oshawa in the 1920's and settled in this 1914, Romanesque Revival style Armoury.

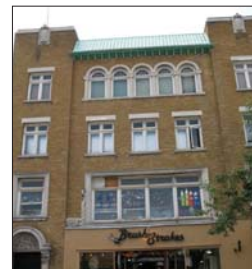


11 ALGER BUILDING

35-37 KING STREET EAST



A landmark in downtown Oshawa, this 1928 classically inspired building boasts ornamental cast stone around the magnificent windows and doors. Visit *Brushstrokes* to view the restored interior.



12 OSHAWA COMMUNITY MUSEUM AND ARCHIVES

1450 SIMCOE STREET SOUTH



Located in beautiful Lakeview Park, *Henry House* was built in 1849 as a one storey Regency cottage and *Guy House* was built in 1835 in the Georgian style.

- Victorian Chair Display



13 CEDARDALE UNITED CHURCH

824 SIMCOE STREET SOUTH



This building has served the Cedardale community since the 1850's, initially as the public school and currently as the United Church.

- Site Open Sunday Only



14 UNION CEMETERY

760 KING STREET WEST



Established in 1837, the 12 hectare site has public and private mausoleums and a Gothic Revival (former) chapel.

- Guided Tours at 1:00 both days or self-guided



15 THORNTON-DUNDEE COMMUNITY CENTRE

210 THORNTON ROAD NORTH



Formerly Union School #5, this Second Empire Structure was built in 1880.

- Heritage Oshawa display



16 SOUTH FIELD, OSHAWA AIRPORT

1000 STEVENSON ROAD NORTH



The *Robert Stuart Aeronautical Collection & Camp X Exhibit* is housed in WWII huts and is one of Canada's most complete collections of military memorabilia.



Includes *Camp X* artifacts, a significant allied wartime military secret.

The *Oshawa Aeronautical, Military and Industrial Museum* contains the largest collection of running military equipment in Canada.

A war surplus Sabre aircraft is the focal point of *Airmen Park*. The *420 Wing R.C.A.F. Association* is a social and recreational club for air force veterans and aviation enthusiasts. Members have contributed the wealth of memorabilia displayed in the WWII structure.

17 TOUR OF CAMP X SITE

INTREPID PARK, BOUNDARY ROAD



Join renowned author Lynn Philip Hodgson for a tour of the *Camp X* site.



- Guided tours 1:00 and 3:00 both days

& 24, 2006

SEPTEMBER 23

Doors Open is a province-wide celebration that provides residents and visitors with a unique opportunity to explore and enjoy sometimes hidden and always interesting places and spaces in our cities, towns and villages – all free of charge!

Doors Open Oshawa will give the public a chance to explore the historic architecture and fascinating heritage sites found throughout our city.

Spend a weekend discovering local history first-hand and celebrate community heritage!



Contact:
Doors Open Oshawa
905-436-5636 x 2162
doorsopenoshawa@yahoo.ca
www.heritageoshawa.ca
www.oshawa.ca
www.doorsopenontario.on.ca

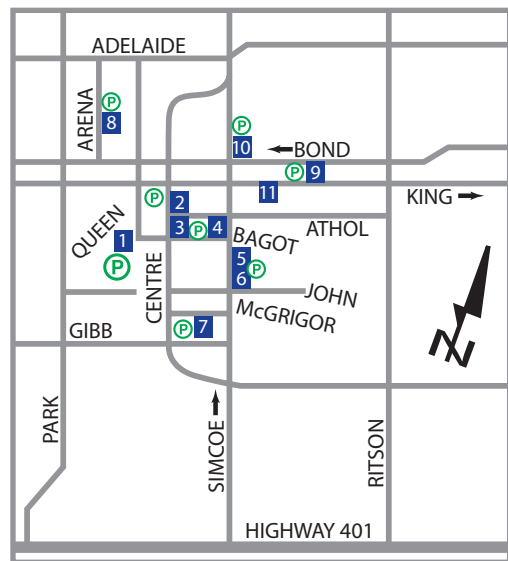
CELEBRATE OUR HISTORY...
VISIT OUR CULTURAL TREASURES

Doors Open Oshawa

SEPTEMBER 23 & 24, 2006

12:00 – 4:00 P.M.

* unless otherwise noted *



Special Events are being planned for the day!
Pick up your supplemental information sheet at any site during the event.

1 THE ROBERT McLAUGHLIN GALLERY

72 QUEEN STREET,
CIVIC CENTRE



Designed by Canadian architect Arthur Erickson, the Gallery showcases all periods of Canadian Art in exhibition programming. Oshawa's civic history is represented in the *Thomas Bouckley Collection of Historical Photographs*.



- Doors Open Information Centre
- Sculptures of Oshawa's historic buildings by Gertrude Colpus students
- Saturday-The Art Adventure - family oriented activities
- Sunday-Exhibition Opening: *Deborah Arnold: Glyphs of Nature* (1:00-3:00)

2 COWAN HOUSE

39 ATHOL STREET WEST



This 1858 Georgian style dwelling, with Italianate properties, was home to early Oshawa Mayor W.F. Cowan.



- Site Open Saturday 12:00-4:00, Sunday 1:00-4:00

3 ST. GEORGE'S MEMORIAL CHURCH

51 CENTRE STREET SOUTH



St. George's, designed by the famous Arts and Crafts architect Eden Smith, opened in 1924, the same year that Oshawa became a city.



- Site Open Saturday 12:00-4:00, Sunday 1:00-4:00
- Boxed Lunch available
- Organ and Bell Concerts

(Charges apply for all lunches and beverages)

4 SIMCOE STREET UNITED CHURCH

66 SIMCOE STREET SOUTH



A Gothic Revival structure built in 1867 by Toronto architects Gundy and Langely. Features a Casavant organ.



- Site Open Saturday Only
- Archival Display

5 CANADIAN AUTOMOTIVE MUSEUM

99 SIMCOE STREET SOUTH



Housed in a 1920's car dealership, the museum showcases the development of the automobile with approximately 65 vehicles dating from 1898 to 1981.



6 OSHAWA GUIDE HOUSE

121 SIMCOE STREET SOUTH



Once used as the parsonage for *Simcoe Street United Church* the building was renovated and deeded by the McLaughlin family to the Girl Guides in 1948, almost 100 years after it was built.



- Boxed Lunch available
- Girl Guide Archival Display

LEGEND

- Parking
- Washrooms
- Wheelchair Access
- Limited Wheelchair Access
- Gift Shop
- Lunch Available
- Designated Property

The Doors Open Committee would like to thank the following sponsors:



Doors Open Oshawa was made possible through the support of many community volunteers, the partnership of heritage organizations, public and private sponsors and The City of Oshawa.